

Work safety in the construction industry



Online training



Why sit in a classroom all day when you can study online?

Work safety in the construction industry course available online, at your own pace, in your own time, 24 – 7!

Nationally accredited training tailored specifically to the hospitality industry:

- Access your training 24/7 anytime, anywhere
- Flexible, self-paced learning
- Easy interactive website
- Interesting relevant course content
- Access to one-on-one trainer support by phone or email
- No need to travel or attend a classroom training session—this can be done in the comfort of your own home
- Free Resume Hosting and Job Search

CPCCOHS1001A – WORK SAFELY IN THE CONSTRUCTION INDUSTRY

CPCCOHS1001A Work safely in the construction industry (White Card) is a mandatory course designed to meet the compulsory Safety Induction training requirement for construction workers in Queensland. This program has been developed under the direction and approval of the Department of Employment and Training (DET).

What will I learn?

This general induction Workplace Health and Safety course provides training on:

- information on the Workplace Health and Safety Act 1995, Workplace Health and Safety Regulation 2008 and relevant codes of practice
- risk management
- principal contractor's safety plan
- work method statements
- material safety data sheets
- basic emergency procedures such as first aid, evacuation plans and procedures
- causes of fires and types of controls
- reporting hazards to relevant persons at the workplace
- obligations of principal contractor's employers, self-employed persons, workers and others
- Workplace Health and Safety Officers
- duty of care under common law
- workplace recording of work injuries, work caused illnesses and dangerous events.

Who can enroll?

new entrants in the construction workforce workers, supervisors and managers working in construction, but do not have the White card individuals, who will undertake housing or construction work in the near future

Interstate Mutual Recognition

Queensland, Tasmania and Western Australia

These states recognise this ONLINE course as meeting the mandatory training requirements for all construction workers to complete a Safety Induction course prior to entering a work site. Participants will be issued a White Card after identification requirements have been satisfied in WA & QLD. Tasmanian residents present their completed statement of attainment to Worksafe Tasmania to receive the card. WA residents may be eligible for a \$20 subsidy from the Building & construction Training Fund, go to <http://bcitf.org> for details and applications.

Victoria, New South Wales, Australian Capital Territory and South Australia

Victoria, New South Wales, Australian Capital Territory and South Australia do not recognise ONLINE training of this course. Please contact etrainu for enquiries about face-to-face training within these states. You may be eligible to complete this training if you intend to work in Queensland, Western Australia or Tasmania.

Northern Territory

Mandatory face-to-face training requirements apply in NT and this course must be completed under guidance of a facilitator. Please contact etrainu on (07) 4721 4222 if you wish to enquire about our face-to-face course in Northern Territory and our tailored program for indigenous learners.



Want more information?

Contact etrainu.

P 1 300 3872 468

E sales@etrainu.com

W www.etrainu.com

CPCCOHS1001A – WORK SAFELY IN THE CONSTRUCTION INDUSTRY

Employment Pathways

- Job in the construction industry
- Health and Safety assistant (Construction industry)

Upon successful completion of this course, you will have the knowledge to identify and follow the General Workplace Health and Safety principles on the construction site.

Please refer to the participant handbook for information on enrollment, RPL (Recognition of Prior Learning), support services, refunds and other relevant information.

Mandatory Document Submission for White Card course

Upon successful completion of the course, the participant will need to submit ALL below mentioned documents to etrainu before they can receive the White Card.

1. Proof of Identity

A certified copy of photographic identification (copy must be clear) such as a current and valid Australian drivers license or passport.

If you cannot provide photographic identification, then you must provide certified copies of at least three other forms of identification (Medicare card, student I.D, bank statements, utility bills)

Note: Certified copies means a copy certified by the words "This is a true copy of 'xx' document" signed by a Justice of the Peace or Commissioner for Declarations after they have sighted the original documentation.

2. Completed Statutory Declaration

You must provide a statutory declaration, witnessed by a Justice of the Peace or Commissioner for Declarations confirming that:

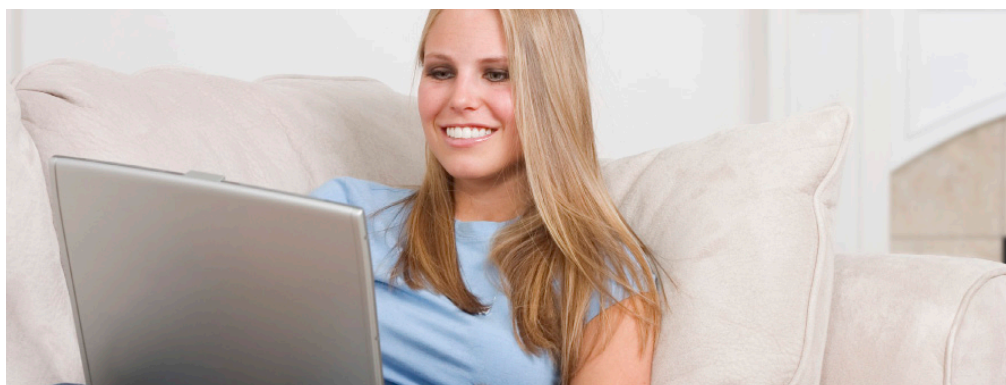
The work submitted during the course is your own work; and you have not received assistance from anyone else (other than an etrainu representative) in the completion of the assessment.

Note: A Statutory Declaration with the statements required (as above) will be available for you to print once you have successfully completed the course.

3. Signed Statement of Completion

A Statement of Completion will be available for you to print out once you have completed the course.

The information provided in this course will help you understand your and your immediate supervisor's and/ or employer's roles and responsibilities in complying with the Workplace Health and Safety Legislation.



Want more information?

Contact etrainu.

P 1300 3872 468

E sales@etrainu.com

W www.etrainu.com